

YASHWANT

Luxurious Living

Navi Peth

Success in life helps you in realizing the dream of owning a beautiful home. Similarly, a pleasant and an auspicious “vaastu” inspires you.

It helps in bringing the best out of you to succeed and triumph in any endeavour.

Homes at Yashwant are designed and built to celebrate success...life!

—◆◆◆—
Luxurious Living
—◆◆◆—



Skyline Yashwant is a luxurious project located in an alley of the serene Navi Peth. If you are looking for a home upgrade, here's the opportunity to realise your dream.

The contemporary building design sets well amid the wide tree canopy and also sets a tone for the modern and luxurious residential layout and planning.

The Developer envisages family lifestyle requirements to craft some of the most beautiful homes.

Spacious 2 BHK Apartments

Pleasant surroundings

Only a few meters from the main road

Attractive entrance

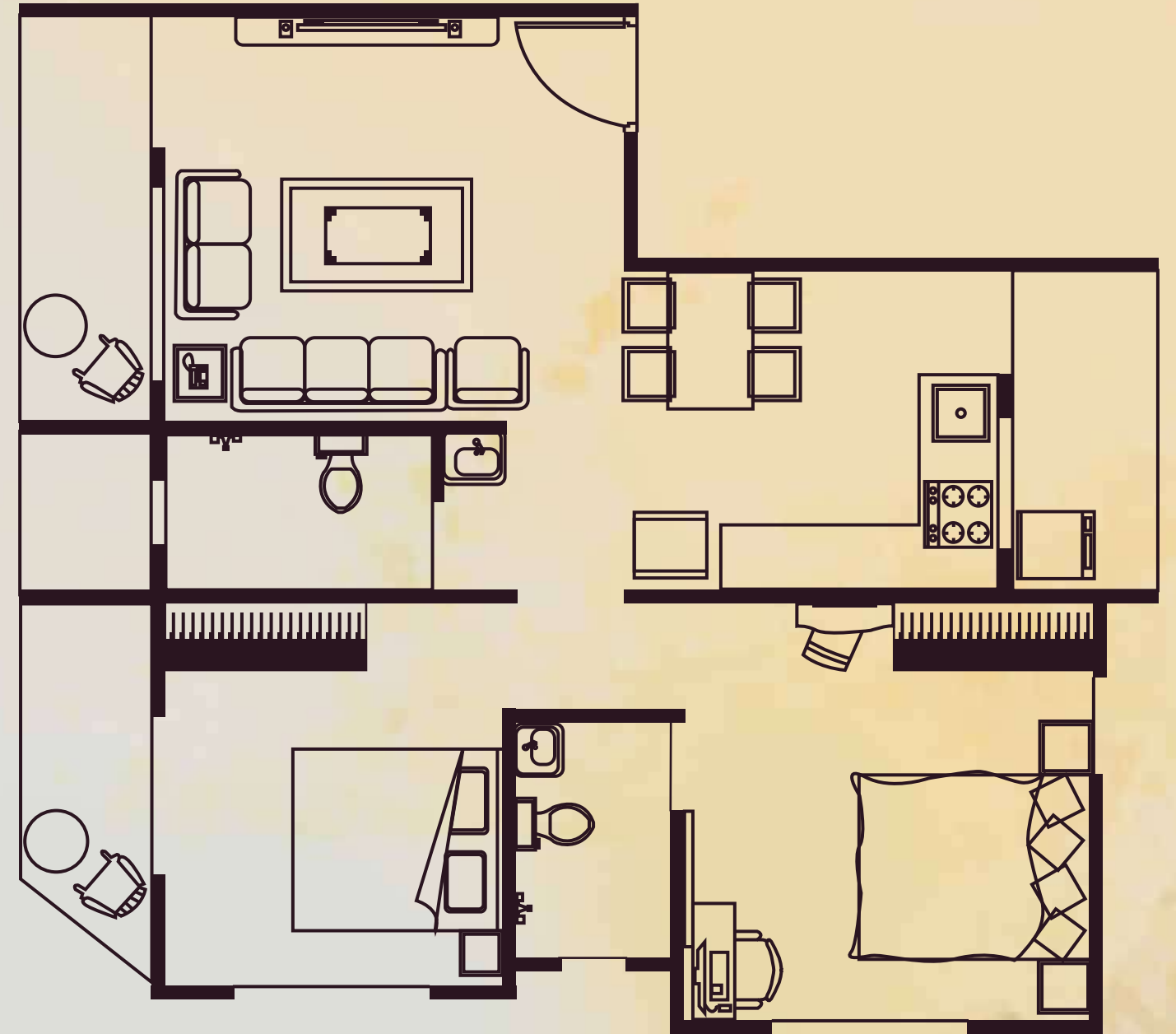
Safety & Security features

Solar powered common lights



Spacious Planning for Luxurious Living

When you buy a 2-bedroom flat, you want to make sure it has enough space for your storage, growing kids, gadgets, yoga and other. We have thought of it while designing Yashwant!

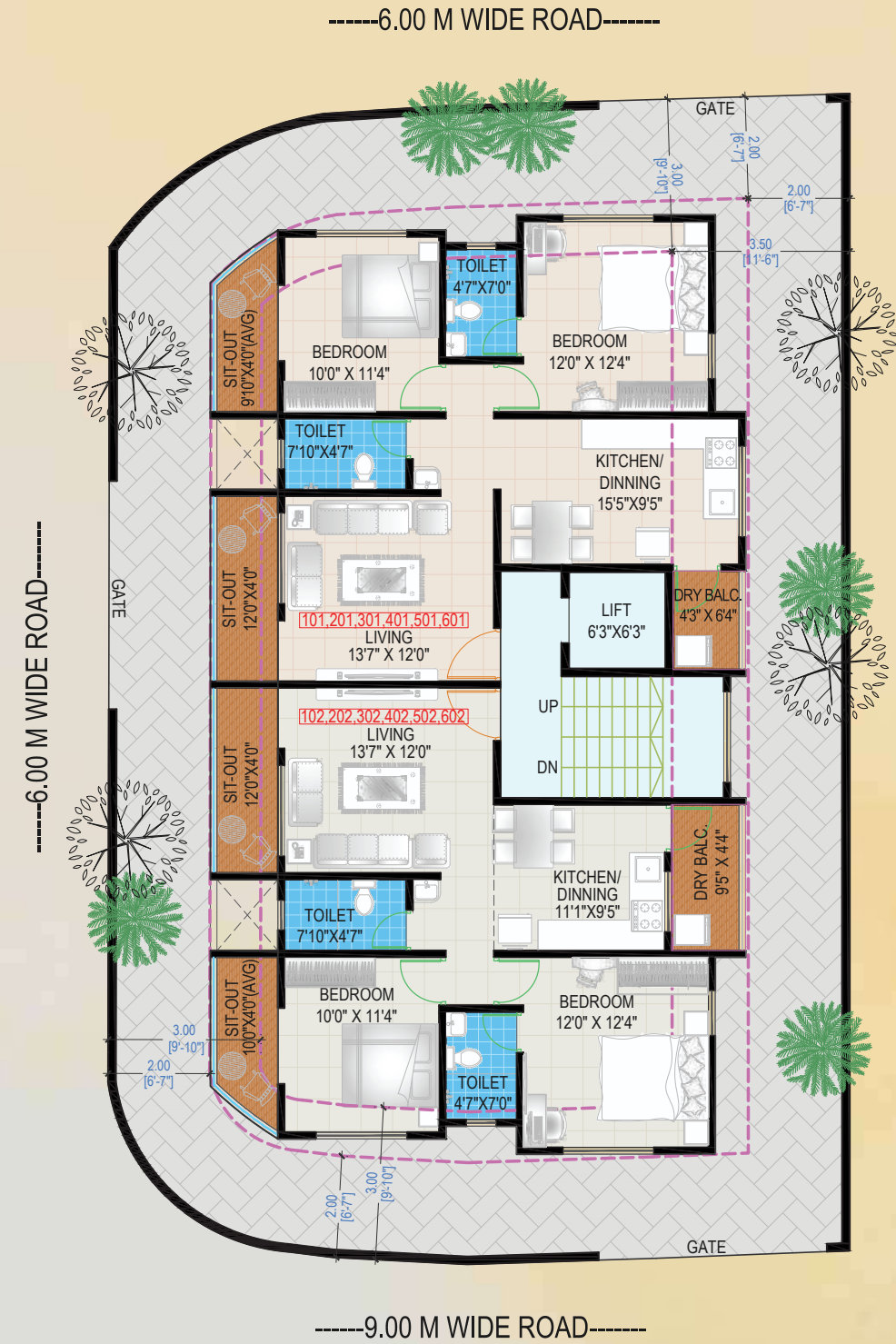


A well-balanced 2 BHK layout

Impressive Building Design



Typical Floor Plan



RERA AREA STATEMENT (IN SQ.FT.)				
FLAT NO.	CARPET	BALCONY	TOTAL	SALEABLE (1.35 %)
101,201,301, 401,501,601	722	113	835	1127
102,202,302, 402,502,602	679	127	806	1088



Specifications & Amenities



R.C.C. WORK :-

R.C.C frame structure with earthquake resistance norms as per I.S. code for structures.



MASONRY WORK :-

External Walls. / Internal Walls In A.A.C. Blocks Internal POP finished plaster single coat of plaster below it.
External sand faced plaster double coat with mixture waterproofing fibers.



DOORS :-

Laminated door frames & laminated flush doors to all doors (marine ply or equivalent).
Granite door frames to all toilets.
Waterproof door shutters to all toilets with five years guarantee.



WINDOWS :-

Granite as sills to windows.
M.S. safety grills.
Powder coated sliding window with mosquito proof shutter.
Louvered windows in toilets with exhaust fan provision.



FLOORING :-

Vitrified 800 X 800 mm ceramic tiles of standard make(Nitco / Kajaria/ Asian or equivalent) with skirting to entire apartment
Anti - skid flooring in toilets
Anti - skid flooring for terraces
Colored glazed tiles up to ceiling in toilets.



KITCHEN :-

Kitchen platform up to 12'0" length with black granite & S.S.sink.
Branded Water purifier.
C.P. Fitting of Jagur or equivalent brand
Kitchen tiles up to ceiling level



TOILETS :-

Good quality concealed plumbing Jagur / equivalent
C. P. Fittings Parryware / Hindware/ Jagur make sanitary wares



WATER PROOFING :-

IPS water proofing to terraces and toilets with 5 years guarantee



ELECTRIFICATION :-

Concealed electrical wiring with adequate light points in every room with modular electrical switches (Legrand or equivalent make). Copper conductors in Polycab or Finolex or equivalent.
Automatic Lift of Otis/ Kone or equivalent with battery / genset backup.
Telephone cable for living room and master bedroom.
A.C. point provision in all bedrooms.



PAINTING :-

Internal - 1st quality plastic emulsion paint to entire apartment.
External - Weather proof acrylic paint.



PARKING SPACE :-

Checkedered tiled parking area and block paving to all area around parking
Compound wall to all sides and adequate gates in front side
Separate toilet at parking for servants & drivers
Attractive Name plates
Attractive entrance lobby
Parking area and entrance lobby will have wheel chair friendly access



SAFETY & SECURITY :-

Audio-visual security / video door phone to each apartment.
Access controlled entrance door at building lobby CCTV camera system.



FIRE FIGHTING :-

Fire fighting system will beprovided as per current PMC /Fire authority norms.



COMMON AMENITIES :-

- Solar water heater connection to each apartment.
- Inverter battery backup for parking & staircase lights.
- Inverter of 600VA capacity to each apartment.
- Branded water filter to each apartment.
- Attractive landscaping in available area.
- Boring water provision for project
- Rain water harvesting system.
- Vermiculture pits for disposal of organic waste.
- Common lighting and meter with solar net metering.

Ideal Residential Location

- Lokmanya Nagar Jogging Park at 200 mtrs -
- Along Kaka Halwai Lane on 80 Feet Shastri Road -
- Quiet & Low-Density Area -
- Green Surroundings -



— **Site Address** —

CTS No. 158 B/7, Final Plot No. 986, Plot No. 7,
SR No.721, LIC Colony, Prashant Nagar,
Kaka Halwai Lane, Navi Peth, Pune - 411030

— **Office** —

Plot No 9, 2nd Floor, Pushkaraj, Shree Gokul Society,
Near Mhatre Bridge, Navi Peth, Pune - 411030

— **Email** —

skycon99@gmail.com

— **Cell** —

99756 35353

— **Website** —

www.skylinepune.in

Maha Rera no, P52100052140



Follow Us

